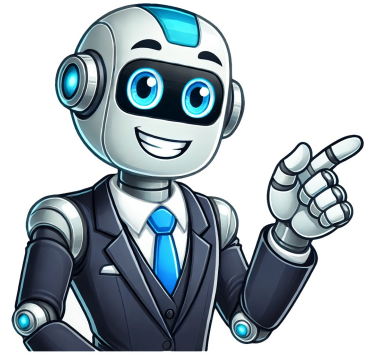


Continue



Driver license test arizona

You must be at least 15 years and six months old to apply for an Arizona driver's license, or a motorcycle instruction permit if you're eligible. If you're under 18, one adult must sign your application for an instruction permit or driver license. This adult will be responsible for any mistakes you make while driving. To pass the written test for a regular driver license, you need to answer at least 24 out of 30 multiple-choice questions correctly. The test is taken on a computer with a touch screen, and there's also audio assistance available. Arizona driver licenses are classified into four types: Class G (graduated), Class D (operator), Class M (motorcycle), and Class A, B, or C (commercial). If you have both a motorcycle license and another type of license, it will be listed as an "endorsement" on the back of your current license. Here are some practice questions based on the Arizona Driver License Manual: 1. When passing a school bus picking up or dropping off children, you should: A. Stop regardless of your direction B. Stop if driving in the same direction C. Slow down and be prepared to stop 2. If you encounter a dust storm while driving, you should: A. Be cautious and drive through it B. Slow down, pull off the road, turn off lights, take foot off brake, and wait for the storm to pass C. Slow down, pull off the road, turn on lights, and wait for the storm to pass 3. The speed limit when approaching a school crossing is: A. 10 mph B. 15 mph C. 25 mph 4. You must notify MVD of an address change within: A. 10 days B. 30 days C. 45 days 5. When riding a bicycle, you should: A. Ride facing traffic B. Stay in the right lane C. Follow the same laws as drivers 6. When changing lanes, you should: A. Look over your shoulder to ensure the lane is clear B. Check the inside rearview mirror C. Slow down 7. When approaching a car from behind at night, you should lower your high beam headlights when you are within: A. 500 feet B. 100 feet C. 200 feet 8. A curb painted red means: A. Loading zone B. Reserved for passengers pick up or drop off C. No parking or stopping 9. Unless prohibited by a sign, you may left turn on red from a one-way road to another one-way road. 10. You should give the right-of-way to any pedestrian who is: A. In a marked crosswalk B. In any crosswalk or intersection C. Crossing any street 11. When entering a road from an alley, you should: A. Stop at the sidewalk B. Honk the horn C. Obey the 15 mph speed limit 12. If a fire vehicle is responding to an emergency, you must stay back at least: A. 200 feet B. 500 feet C. 3 to 6 seconds 13. To know where traffic is behind you, you should: A. Frequently check your rearview mirror B. Look out the back window C. Keep other vehicles out of your blind spots 14. Your driver license can be suspended or revoked due to various reasons, such as reckless driving or failure to notify MVD of an address change. Note: The answers provided are based on the original text's correct answers. If you're under 21 and have a blood alcohol level of 0.15% or more, your answer is correct. The other options are not accurate. To avoid glare from headlights of an approaching car, you should keep looking briefly to the side of the road. During a severe dust storm, it's best to slow down and pull off the road. Right turn on red is permitted only where indicated by a sign. When approaching an intersection with a yellow traffic light, you should come to a safe stop and wait for the light to turn green. The Motorsport Images Collections captures events from 1895 to today's most recent coverage. Discover The Collection and explore our latest gallery of Editors' Picks. Passing the official MVD written exam requires reaching an 80% passing probability. You'll be ready to pass with ease and confidence once you reach this milestone. Our Arizona DMV practice tests cater to every learning stage, offering varying content and difficulty levels. The real DMV test simulator is designed as a final permit test before the general knowledge exam, with a 100% free and accessible format on any internet-enabled device. Unlike the real test, this simulator can be taken multiple times until achieving a satisfactory score. Passing it consistently guarantees a pass in the real test. The AZ DMV test quiz has 30 questions, covering rules of the road, road signs, traffic signals, pavement markings, and other minor driver's ed topics. The randomly generated exam makes preparation difficult, as you need to be equally strong across various subjects to pass. Regular practice on the AZ drivers permit practice test ensures no essential topic is missed. Each round contains 30 questions, but a large database of questions supplies the test with multiple options. You should aim to achieve a proficiency level that allows scoring well above the 80% pass requirement. Comfort with the Arizona driver license manual content is recommended before using the simulator, as it's challenging and lacks study aids or integrated support tools. Arizona Driving License Requirements Financial responsibility for private vehicle insurance includes \$25,000 bodily injury liability per person, up to \$50,000 for two or more people, and \$15,000 property damage liability. To obtain an Arizona driver's license, one must pass a written test, vision test, and road test. The written test consists of 30 multiple-choice questions, with a passing score of 80 percent (24 correct answers). Allotted time to complete the test is 30 minutes, with a 7-day waiting period before retesting. Practice tests, such as those offered by Driver's Prep, are designed to help study and pass the written test. These tests simulate the actual exam, with questions drawn from an extensive database of over 1,000 possible questions. Each practice test is unique, with instant feedback provided after each question. To prepare for the test, it's essential to study the Arizona Driver's License Manual, which covers all necessary material for the exam. Practice tests should supplement reading, not replace it, allowing individuals to gauge their progress and identify areas for improvement. Aiming for a perfect score of 100 percent is recommended, focusing on learning and understanding rather than memorization. Note: This text has been paraphrased from the original article, removing unnecessary content and maintaining the same language. If your Arizona driver's license is temporarily suspended, don't worry - it's just a hold that can be lifted soon. You might not need to take both written and driving tests if you have an out-of-state license. MVD usually waives these requirements. However, in some cases, they may ask you to pass the knowledge test even with a valid license. It's best to call your local MVD office before visiting to clarify. The permit exam consists of 30 multiple-choice questions. You can get six wrong and still pass (80%). The test is taken on a computer with a touch screen, featuring random questions from a larger pool based on the Arizona Driver's License Manual. If you're under 18, AZMVD lets you take the test online at home with parental supervision. To supervise your teen's online test, parents or guardians must: have a state-issued driver's license or ID card, certify their relationship to the test-taker, and ensure a distraction-free environment. The parent registers the Permit Test @ Home account like they would for an official test at MVD. You'll see immediate results on-screen after finishing the test. If you fail, you can retake it without waiting, free of charge. At MVD offices, you must wait 24 hours before retesting. Some professional driving schools also offer online tests. If you struggle with reading, ask for an oral test at MVD locations. They'll provide one in these situations: if you cannot read or have poor reading skills, if you've failed multiple written tests, or if a foreign language test isn't available. MVD allows three attempts to pass the written test within 12 months from your application date. If you fail at an office, you can retake it the next day with available appointments. After three failures, you'll need a new application unless using the Permit Test @ Home program as a teen driver. Arizona's Graduated License Program lets teens gain driving experience and skills over time through three steps: Instruction Permit (learner's permit), Graduated Restricted Driver's License (provisional license), and Unrestricted Driver's License (class D). Apply for the Instruction Permit if you're at least 15 years and six months old but under 18. Bring a completed Form 40-5122 to the licensing office or start online. If you're under 18, a parent or guardian must sign the application for a permit, and the signature needs to be witnessed by someone else. This usually happens when you visit the MVD office in person. You'll need to show proof of your identity and age, and the MVD will verify that you're living in the U.S. legally. Before getting your permit, you have to pass both a written test and a vision test. Once you get your instruction permit, you can start practicing driving under supervision. You'll need to be accompanied by a licensed driver who's at least 21 years old and sitting next to you while you drive. The permit is valid for one year. When you're 16 and have had an instruction permit for six months, you can apply for a Graduated Driver's License, also known as a provisional license or intermediate license. To get this license, the MVD will ask for a log of 30 hours of supervised driving practice, including 20 hours during the day and 10 hours at night. With your restricted driver's license, you can drive alone but only between 5 a.m. and midnight. If you want to drive at night, you'll need to have a parent or guardian with a valid driver's license sitting in the front passenger seat. However, if you're driving to or from school, work, or a family emergency, you can drive unsupervised after midnight. The nighttime restriction is lifted after six months with a graduated driver's license. This license also has a passenger restriction: you can't drive with more than one passenger under 18 unless they're your siblings or there's a parent or guardian with a valid driver's license in the front seat. In addition to these restrictions, there's a new rule about using wireless devices while driving. You can't use a device for non-emergency reasons, but you can make emergency calls when it's impossible to stop the vehicle safely. Some exceptions include using an audible turn-by-turn navigation system and making phone calls with an earpiece or hands-free device. In 2019, a new law banned handheld cell phones while driving, except for certain situations like stopping at traffic lights. However, you can still use GPS systems and make emergency calls to 911. If you want, you can continue using your Class G graduated driver's license even after turning 18, but it's likely more convenient to get a new license reflecting your Class D operator status. To replace your current license in Arizona, you must turn 21 to get a new license with a horizontal orientation. If you're under 21, your license has an under-21 designation. You need to report any address change to MVD within 10 days and update your personal info online or at a service office. Arizona doesn't record driver's license failure rates, but about one-third of applicants fail the knowledge test the first time. The state offers four options for digital licenses on smartphones, and a broken yellow line is reserved for passing traffic and can be used by vehicles traveling in either direction Diabetic drivers who require insulin should not drive if there is any chance that they might go into shock.If a bicycle on your right reaches an uncontrolled intersection (i.e., one without signs or signals) at about the same time as you do, you should yield.Unbalanced tires or low tire pressures can cause crashes.Regulatory devices tell you when you must slow down or stop.When slowing down or stopping, you must come to a complete halt.What does this sign indicate?This sign indicates that all lanes are turning into one lane ahead.Diagonal yellow stripes painted on some streets and highways indicate two-way traffic.If a driver behind you repeatedly flashes their headlights, you should move over or adjust your speed._____are the most frequent type of crashes on interstate highways.A "Speed Zone Ahead" sign means that you are approaching an area where the speed limit is being enforced.Calculating your test resultsYour test results are ready.Pass the First Time - GuaranteedBefore you view your test results, discover how you can pass faster with Premium:Real Exam-Like Arizona QuestionsGet 650+ questions seen on the real test.If you don't pass, it costs you nothing.97% Premium Users Pass on Their First TryCompare with the average US passing rate of 49%.