



# Building Maintenance Units - RC-T108

*Brochure roof cars*

*Fall Protection*

*Building Maintenance Units*

*Suspended Platform Systems*

*Scaffolding Systems*

*Suspended Access Rental*

**XSPlatforms<sup>®</sup>**



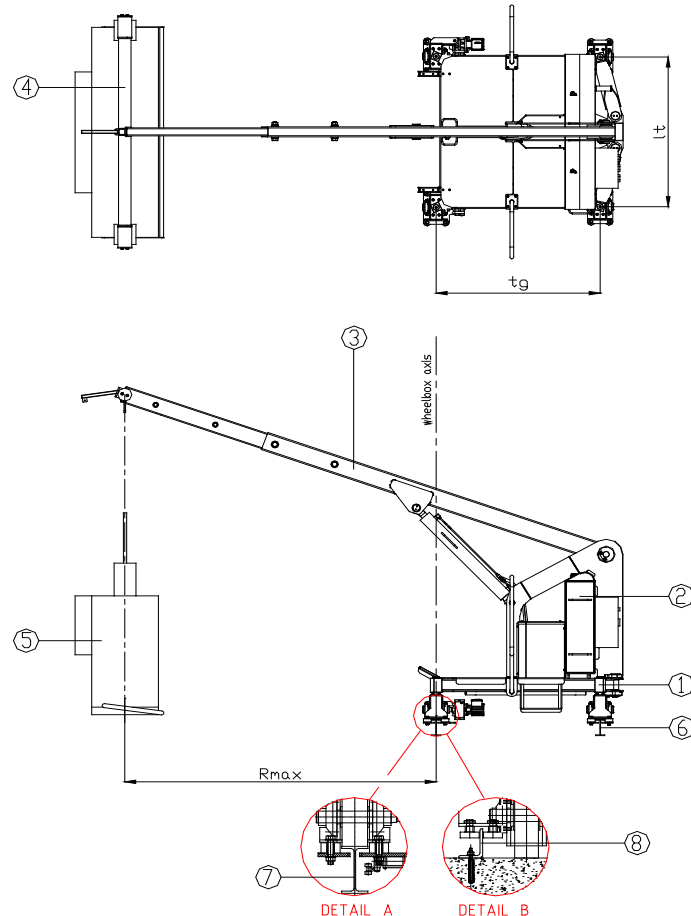
# Roof car RC-T108

## Product description

BMU RC-T108 for façades maintenance and cleaning is designed and manufactured according to European Regulations EN 1808. RC-T108 is the smallest and the lightest traversing roofcar with XSPlatforms range. It can be used on simple buildings with height up to 100 meter (328 ft), maximum outreach is 3 meter (9'10<sup>1/8</sup>"). Undercarriage is designed on 4 wheels with 2 driven wheels and track gauge 1.5 meter (4'11<sup>1/16</sup>"). The undercarriage is composed of a metal frame with steel motorized wheels which can traverse around the building roof along an anchored rail track, a free laid rail track or concrete path.

## Main components

- 1 - undercarriage
- 2 - counterweight
- 3 - jib
- 4 - fixed balancer
- 5 - selfhoisting gondola
- 6 - track (IPE 160)
- 7 - track (detail A)
- 8 - guiding profile (for trackless version detail B)



## Technical information

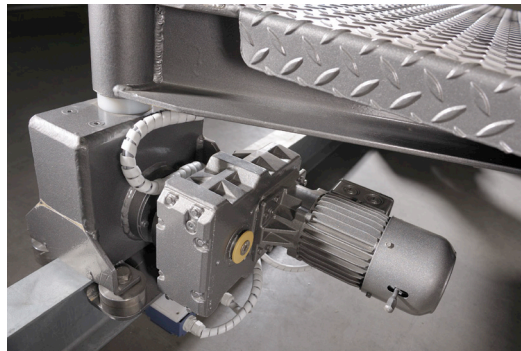
	mm	inch
OutReach (Rmax)	max. 3000	9'10 <sup>1/8</sup> "
Track gauge (tg)	1500	4'11 <sup>1/16</sup> "
Length of trolley [between wheels] (lt)	1500	4'11 <sup>1/16</sup> "

### General characteristics

- Safe working load (BMU) up to 250 kilogram (551 lbs)
- Control system power cable
- Power source 3Ph 318~415 Volt 50 Hertz
- Control voltage 24 Volt
- Type of jib movement motorized with cylinders
- Type of finish painted and parts galvanized 5 years standard guarantee
- Colour of units choice of RAL colours
- Traversing speed 12 meter (40 ft)/minute
- Hoisting speed 9-18 meter (30-60 ft)/minute
- Wire rope diameter 8 millimeter (0<sup>5/16</sup>"
- Rope safety factor min. 12
- Type of undercarriage 4 wheels (2 driven wheels)
- Platform/cradle selfhoisting 2-person gondola

### Safety features

- Lower limit safety switch
- Upper limit safety switch
- Emergency stop switch
- Traversing safety switch
- Emergency descent control (power loss)
- Over-speed safety device
- Broken wire safety device
- Lose wire rope safety device
- Overload safety device
- Power cable limit switch
- End of wire rope safety switch



### **Additional accessories**

- Water tank min 30 liters (6.6 gallon) c/w drain cock, all rust free type
- Safety harness (full body type) c/w lanyard

### **Conform to standards**

- To all Dutch safety codes
- European Union - EN 1808 (we also comply with every country (non European) standards)
- XSPlatforms is certified to ISO 9001:2000, all XSPlatforms products comply





# Access to Innovation

In over fifteen years, XSPlatforms has built up a convincing track record in developing smart solutions for facade access. We offer the widest range of products and solutions. What is more, our customers can confidently expect us to understand their business, and to come up with innovative answers to increasingly complex questions, time and again. As a result, we have become the partner of choice for so many discerning customers, providing solutions for some of the most complex structures around the world and facilitating work on more than 2,000 roofs (and counting). We care for our customers, in every sense. And that is why we develop and engineer our products as though our lives depended on them.



**XSPlatforms BV**  
P.O. Box 510  
4200 AM Gorinchem  
The Netherlands  
Telephone +31 (0)183 56 91 11  
Fax +31 (0)183 56 91 12  
E-mail [info@xsplatforms.com](mailto:info@xsplatforms.com)

**XSPlatforms Middle East**  
P.O. Box 16873  
Jebel Ali, Dubai  
United Arab Emirates  
Telephone +971 (4) 887 24 88  
Fax +971 (4) 887 24 99  
E-mail [info@xsplatforms.com](mailto:info@xsplatforms.com)